



CNC TOOL STORAGE SOLUTIONS

Thanks to the flexibility of the CNC line, your tools will be protected during regular handling, transportation and storage. The Rousseau CNC tool rack distinguishes itself in many ways :



By its modularity : it is compatible with the entire line of Rousseau products;

By its flexibility : offered blank or with perforations, it can adapt to any type of tool;

By its sturdiness : maximum support and stability prevents tools from falling, even when the rack is tilted;

By its ergonomics : practical, ergonomic handles make it easy to carry. Handling is made easier in the Spider® shelving and on the multi-purpose stand by the 20° inclination of the adaptors;

By its security : sturdy PVC extruded design, it can withstand blows and allows for coolant drainage, prolonging tool life.

The tool identification zone allows for quick retrieval of tools.

87" Shelving with Modular Drawers

NCS2307



NCS2307

| | |
|------------------------------------|-------------------------|
| 1 - 3" drawer | RF32-302403 |
| 2 - 4" drawers | RF32-302404 |
| 2 - 7" drawers with adaptors | RF32-302407 NC54-240 |
| 5 shelves | SH20-3024 |
| 1 set of 48" mounting brackets | RE30-48 |
| 4 shelf dividers | SH50-2412 |
| 2 welded closed upright assemblies | SH12-24087 |
| 1 front base | SH28-3002 |
| 4 floor anchor plates | SH45 |
| 1 floor anchor hardware kit | SH47-04 |
| 1 back panel | SH31-3039 |
| 1 back panel | SH31-3051 |

| Product # | W x D x H | # of racks |
|-----------|-----------------|------------|
| NCS2307 | 30" x 24" x 87" | 8 |

NOTE Tool racks must be ordered separately.

SEE PAGE 168

NOTE Drawer partitioning is not included and must be ordered separately.

SEE PAGES 124-147

Modular Cabinet with Drawers

NCM0949



NCM0949

| | |
|--|--------------|
| 1 cabinet with one-at-a-time mechanism | RA30-362458A |
| 1 - 2" forklift base | RA52-362402 |
| 3 - 7" drawers | RF31-362407 |
| 3 pairs of tool rack adaptors | NC54-2401 |

| Product # | W x D x H |
|-----------|-----------------|
| NCM0949 | 36" x 24" x 60" |

NOTE Tool racks must be ordered separately.

SEE PAGE 168

75" Shelving with Adaptors

NCS4114



NCS4114

| | |
|------------------------------------|------------|
| 3 shelves | SH20-3618 |
| 3 pairs of tool rack adaptors | NC51-1801 |
| 2 welded closed upright assemblies | SH12-18075 |
| 1 front base | SH28-3602 |
| 4 floor anchor plates | SH45 |
| 1 floor anchor hardware kit | SH47-04 |
| 2 back panel | SH31-3639 |
| 2 shelf dividers | SH50-1812 |

| Product # | W x D x H | # of racks |
|-----------|-----------------|------------|
| NCS4114 | 36" x 18" x 75" | 9 |

NOTE Tool racks must be ordered separately.

SEE PAGE 168

! Shelving with drawers must be anchored to the floor (anchor kit included).

Mobile Cabinet

NCM8185



NCM8185

| | |
|--|---------------|
| 1 cabinet with standard lock | RA30-362430L3 |
| 1 laminated wood top | WS14-3624A |
| 1 pair of 6" rigid casters | RB83-01 |
| 1 pair of 6" swivel casters with total-lock brake system | RB83-03 |
| 1 side handle | RB90-24 |
| 2 drawers with integrated lock-In mechanism | RF31-362404A |
| 3 drawers with integrated lock-In mechanism | RF31-362406A |
| 1 single WM frame | WM11-2824 |
| 1 foldaway shelf | RC00-152401 |
| 2 standard WM tool rack adaptors | NC50-2801 |

| Product # | W x D x H |
|-----------|---------------------|
| NCM8185 | 36" x 24" x 61 1/2" |



SEE PAGE 180

NOTE Tool racks must be ordered separately.

SEE PAGE 168

NOTE Drawer partitioning is not included and must be ordered separately.

SEE PAGES 124-147

Mobile Cart

NCW0106



NCW0106

| | |
|-------------------------------|-------------|
| 1 mobile cart with 4" casters | WMA5002 |
| 1 shelf with handle | WM84-081401 |
| 4 double adaptors for WM | NC50-2802 |

| Product # | W x D x H |
|-----------|---------------------|
| NCW0106 | 32" x 27" x 41 1/4" |

NOTE Tool racks must be ordered separately.

SEE PAGE 168



Proposals

Workstation with Multi-Purpose Frame

NCW0095



NCW0095

Top section :

| | |
|---|-----------|
| 1 double WM unit frame | WM11-5648 |
| 1 tiltable shelf | WM20-2812 |
| 3 partial dividers | SH52-1206 |
| 1 power outlet channel | WM40-2801 |
| 1 document holder with arm | WM70-01 |
| 1 perforated panel | WM53-2424 |
| 1 panel bracket kit | WM50-01 |
| 1 double back single hooks (packs of 10) | WM98-03 |
| 1 overhead workstation light | WM45-48T8 |
| 1 WM tool rack | WM30-01 |
| 2 WM upright adaptors : | |
| -1 single | NC50-2801 |
| -1 double | NC50-2802 |
| 1 pair of cantilever overhead supports | WM18-26 |

Bottom section :

| | |
|----------------------|-------------|
| 1 laminated wood top | WS14-6030A |
| 1 open leg | WS20-2732 |
| 1 side panel | WS62-2728 |
| 1-light-duty cabinet | WS30-2460 |
| 1-4" H cabinet base | WS31-182704 |

| Product # | W x D x H |
|-----------|-----------------|
| NCW0095 | 60" x 30" x 80" |

NOTE CNC tool racks must be ordered separately.

SEE
PAGE
168

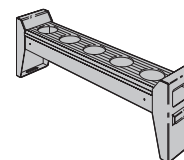
Stationary Multi-Purpose Stand

NCW0283



NCW0283

| | |
|---|------------------|
| 1 multi-purpose stand with leveling glides | WMA1001 |
| 4 WM adaptors | NC50-2802 |
| 2 plastic bin rails | WM28-2801 |
| 2 tiltable shelves | WM20-2812 |
| 6 partial dividers | SH52-1206 |
| Product # | W x D x H |
| NCW0283 | 32" x 27" x 54" |



NOTE Red plastic bins are not sold by Rousseau.

NOTE CNC tool racks are not included in the models and must be ordered separately.

SEE
PAGE
168

Mini-Racking

NCS6078



NCS6078

| | |
|---------------------------------------|------------------|
| 5 pairs of heavy-duty beams | SR22-60 |
| 2 welded Mini-racking uprights | SR13-240872 |
| 5 heavy-duty tie bars | SR27-24 |
| 2 steel decking levels : | |
| - 4 shelves | SR40-1824 |
| - 2 shelves | SR40-2424 |
| Capacity per level of steel decking : | 1925 lb |
| Capacity per level of PVC decking : | 1000 lb |
| Product # | W x D x H |
| NCS6078 | 60" x 24" x 87" |

NOTE The three decking units with perforated PVC shelves for CNC tools are not included and must be ordered separately.

SEE
PAGE
173



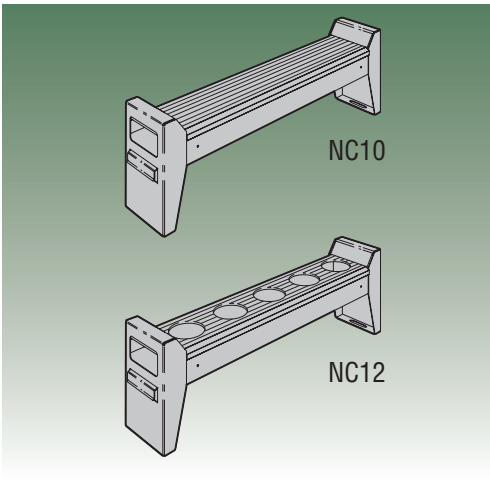
CNC TOOL
STORAGE

Tool Racks

Tool Rack



NC10 / NC12



Offered with blank or perforated surface;

Made of sturdy PVC, the extruded part of the rack protects tools against shocks, corrosion and blows;

Offered in 30" and 36" wide;

The identification zone allows for quick retrieval of tools;

Compatible with WM11 (or 2 WM10 uprights and 1 WM15 cross member) and WMA units with the NC50 adaptor;

| | | |
|-----------------------------------|--|---|
| Compatible with modular drawers : | 30" W x 21" D, 30" W x 24" D, 30" W x 27" D, | 36" W x 18" D, 36" W x 24" D, with the NC54 adaptors; |
|-----------------------------------|--|---|

| | | |
|--|----------------------------------|---|
| Compatible with Spider® shelving units : | 30" W x 24" D, 36" W x 18" D, | 36" W x 24" D, with the NC51 adaptors. |
|--|----------------------------------|---|

IMPORTANT

36" wide CNC tool racks are not compatible with the WM structure.

Tool racks and PVC shelves must be ordered separately from proposed models. The following chart gives the product number that matches your tool type.

The number of tools that a tool rack or a PVC shelf can hold varies according to tool diameter and the length of extruded surfaces. The number of holes specified in the chart indicates the number of perforations per extruded surface.

| TOOL TYPE | SHELVING- MULTI-PURPOSE UPRIGHTS AND FRAMES- CABINETS | | | |
|------------------|---|------------|-----------------------------|------------|
| | 30" tool rack | # of holes | 36" tool rack | # of holes |
| Blank rack | NC10-3000 | — | NC10-3600 | — |
| Taper 30 | NC12-3001 | 10 | NC12-3601 | 12 |
| Taper 40 | NC12-3003 | 7 | NC12-3603 | 8 |
| Taper 50 | NC12-3005 | 5 | NC12-3605 | 6 |
| 3/4" Straight | NC12-3010 | 20 | NC12-3610 | 24 |
| 1" Straight | NC12-3011 | 20 | NC12-3611 | 24 |
| 1 1/4" Straight | NC12-3013 | 20 | NC12-3613 | 24 |
| 1 1/2" Straight | NC12-3015 | 8 | NC12-3615 | 10 |
| 1 3/4" Straight | NC12-3016 | 8 | NC12-3616 | 10 |
| 2" Straight | NC12-3018 | 6 | NC12-3618 | 7 |
| 2 1/4" Straight | NC12-3019 | 6 | NC12-3619 | 7 |
| 2 1/2" Straight | NC12-3021 | 6 | NC12-3621 | 7 |
| C4 Sandvik Capto | NC12-3031 | 22 | NC12-3631 | 26 |
| C5 Sandvik Capto | NC12-3032 | 10 | NC12-3632 | 12 |
| C6 Sandvik Capto | NC12-3033 | 7 | NC12-3633 | 8 |
| HSK 32 (A-C-E) | NC12-3041 | 22 | NC12-3641 | 26 |
| HSK 40 (A-C-E) | NC12-3042 | 22 | NC12-3642 | 26 |
| HSK 50 (A-C-E) | NC12-3043 | 10 | NC12-3643 | 12 |
| HSK 63 (A-C-E) | NC12-3044 | 7 | NC12-3644 | 8 |
| HSK 80 (A-C-E) | NC12-3045 | 5 | NC12-3645 | 6 |
| HSK 100 (A-C-E) | NC12-3046 | 4 | NC12-3646 | 5 |
| 32 KM | NC12-3050 | 22 | NC12-3650 | 26 |
| 40 KM | NC12-3051 | 22 | NC12-3651 | 26 |
| 50 KM | NC12-3052 | 10 | NC12-3652 | 12 |
| 63 KM | NC12-3053 | 7 | NC12-3653 | 8 |
| VDI 30 mm | NC12-3060 | 6 | NC12-3660 | 7 |
| VDI 40 mm | NC12-3061 | 5 | NC12-3661 | 6 |
| VDI 50 mm | NC12-3062 | 4 | NC12-3662 | 5 |
| Exact dimensions | 25 1/4" W x 5" D x 7 7/8" H | | 31 1/4" W x 5" D x 7 7/8" H | |



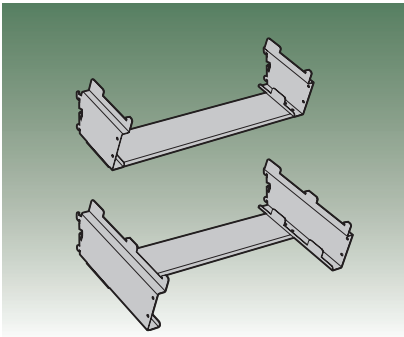
CNC TOOL STORAGE

Components

Adaptors for Tool Rack

WM Adaptor

NC50



Tool rack adaptor for use with the NC10-30XX and NC12-30XX in the WM11 (or 2 WM10 uprights and 1 WM15 cross member) or WMA structure,

SEE PAGE 107

The side security notches in the WM adaptor for uprights ensure tool rack stability;

Inclined 20° for easy access to tools;

Single or double model holds one or two 30" tool racks;

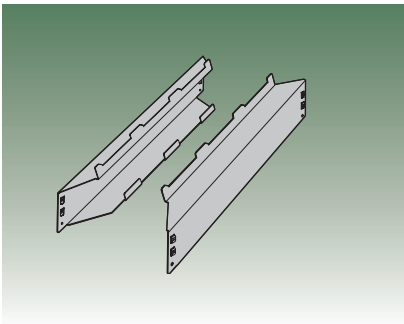
Easy assembly, no tools required.

| Product # | Type |
|-----------|--------|
| NC50-2801 | Single |
| NC50-2802 | Double |



Adaptors for Shelving

NC51



Sold in pairs;

Tool rack adaptor for use with NC10 and NC12 in 30" x 24", 36" x 18" and 36" x 24" Spider® shelving;

SEE PAGE 171

Inclined 20° for easy access to tools;

Can hold 3 to 4 NC10 or NC12 tool racks;

Adaptor compatible with Spider® shelving unit only;

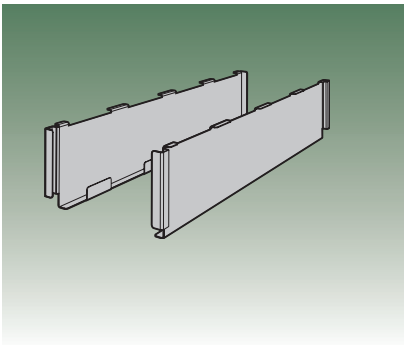
Easy assembly, no tools required.

| Product # | Depth | # of Racks |
|-----------|-------|------------|
| NC51-1801 | 18" | 3 |
| NC51-2401 | 24" | 4 |



Adaptors for Drawers

NC54



Sold in pairs;

Tool rack adaptors for use with NC10 and NC12 in 30" x 21", 30" x 24", 30" x 27", 36" x 18" and 36" x 24" modular drawers (RF31 / RF32 / RF33 / RF34);

SEE PAGES 126-127 170

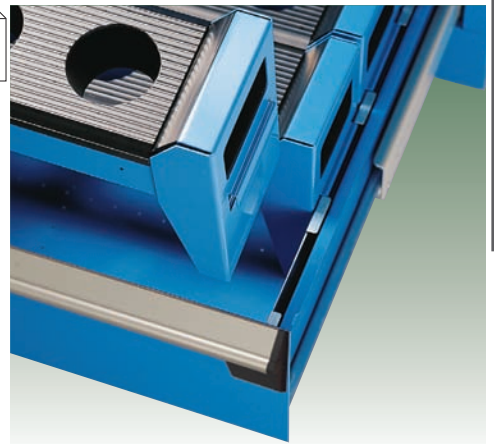
Prevent tool racks from tipping when opening or closing drawer;

Can hold 3 to 4 NC10 and NC12 tool racks;

The adaptor for drawers and the tool rack may be installed in a 7" drawer only or in 10", 12" and 14" drawers for CNC tools;

Easy assembly, no tools required.

| Product # | Depth | # of Racks |
|-----------|-------|------------|
| NC54-1801 | 18" | 3 |
| NC54-2101 | 21" | 3 |
| NC54-2401 | 24" | 4 |
| NC54-2701 | 27" | 4 |

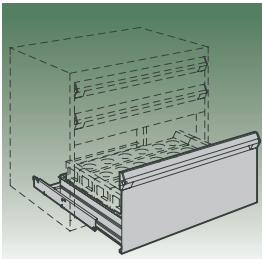


CNC TOOL STORAGE

Drawers and Drawers Accessories

Heavy-Duty Drawer for CNC Tools

RF33 / RF34



Heavy-duty drawer for cabinet : RF33;
 Heavy-duty drawer for shelving : RF34;
 Full-faced door facilitates taking NC10 and NC12 in and out of the drawers;
 Available in : 10", 12" and 14" high;
 When ordering, add the height of the drawer to the number. Ex : RF33-3027/14.

| Product # | W x D | Application |
|-----------|-----------|-------------|
| RF33-3021 | 30" x 21" | cabinet |
| RF33-3027 | 30" x 27" | cabinet |
| RF33-3618 | 36" x 18" | cabinet |
| RF33-3624 | 36" x 24" | cabinet |
| RF34-3024 | 30" x 24" | shelving* |
| RF34-3618 | 36" x 18" | shelving* |
| RF34-3624 | 36" x 24" | shelving* |

*Mounting brackets are required to install drawers in shelving.

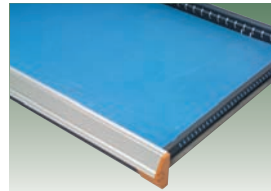
NOTE Adaptors must be ordered separately.

SEE PAGE 169

SEE PAGE 77

Protection Foam

RG41

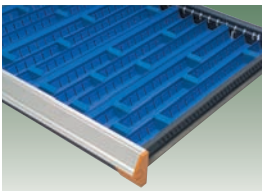


Protects stored materials;
 Blue foam, 1/4" thick;
 Note : partitions and dividers cannot be used in drawers where this foam is installed.

| Product # | W x D |
|--------------|-----------|
| RG41-3021-01 | 30" x 21" |
| RG41-3024-01 | 30" x 24" |
| RG41-3027-01 | 30" x 27" |
| RG41-3618-01 | 36" x 18" |
| RG41-3624-01 | 36" x 24" |

Groove Tray

RG35

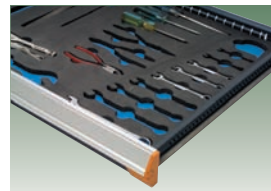


Useful in storing and protecting long objects such as drill bits, borers, sockets, lathe parts, files, tools, etc. ;
 Blue for easy identification of objects;
 Designed for 3" H and 4" H drawers;
 Compatible with partitions, dividers and plastic bins;
 Available nominal depths : 18", 21", 24" and 27";
 When ordering, add the depth of the drawer to the groove tray number.
 Ex. : RG35-062425.

| Product # | Divider # |
|------------|-----------|
| RG35-04_10 | RG39-10 |
| RG35-06_10 | RG39-10 |
| RG35-04_15 | RG39-15 |
| RG35-06_15 | RG39-15 |
| RG35-06_25 | RG39-25 |

Foam for Tools

RG42



Oil-resistant and non absorbent;
 1 blue foam, 1/4" thick ;
 1 black self-adhesive foam, 1/2" thick ;
 Sold without cut-outs.

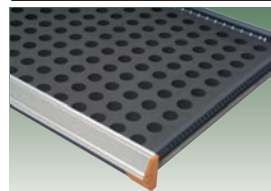
| Product # | W x D |
|--------------|-----------|
| RG42-3021-01 | 30" x 21" |
| RG42-3024-01 | 30" x 24" |
| RG42-3027-01 | 30" x 27" |
| RG42-3618-01 | 36" x 18" |
| RG42-3624-01 | 36" x 24" |

For custom cut-outs,

SEE PAGE 181

Foam for Collets

RG43



Oil-resistant and non absorbent;
 1" thick black foam;
 Sold without cut-outs.

| Product # | W x D |
|--------------|-----------|
| RG43-3021-01 | 30" x 21" |
| RG43-3024-01 | 30" x 24" |
| RG43-3027-01 | 30" x 27" |
| RG43-3618-01 | 36" x 18" |
| RG43-3624-01 | 36" x 24" |

For custom cut-outs,

SEE PAGE 181

Plastic Bin

PATENTED



Simplify storing, moving and managing small items. Light-weight and resistant;
 Designed for 3" and 4" high drawers;
 45° angle for easy identification of bin contents and removal of bins;
 Compatible with louvered panels (SH65, SH66 and WM55) and plastic bin rails (SH62 and WM28);
 Compatible with the following accessories : partitions, dividers and groove trays;
 6" bins can be partitioned.

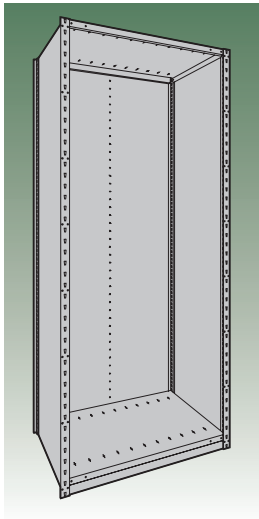
| Dimensions | | | Product # | | |
|------------|----|----|-------------|-----------|-----------|
| W | D | H | Bin | Partition | Divider |
| 4" | 3" | 2" | RG20-040302 | - | - |
| 6" | 3" | 2" | RG20-060302 | RG22-0302 | - |
| 6" | 6" | 2" | RG20-060602 | RG22-0602 | RG24-0602 |
| 4" | 3" | 3" | RG20-040303 | - | - |
| 6" | 3" | 3" | RG20-060303 | RG22-0303 | - |
| 6" | 6" | 3" | RG20-060603 | RG22-0603 | RG24-0603 |

RG20

Components

Spider® Shelving Components

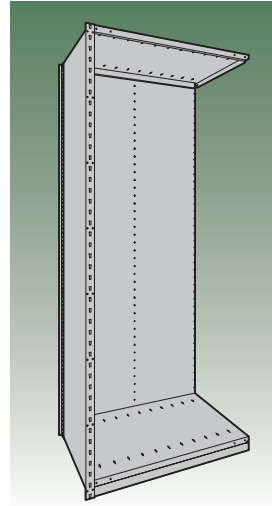
Starter Unit of Shelving



| | |
|--------------------------|------|
| 2 welded closed uprights | SR12 |
| 2 box shelves | SH20 |
| 2 back panels | SH31 |
| 1 front base | SH28 |

| Product # | W x D x H |
|-----------|-----------------|
| NCS0051 | 30" x 24" x 75" |
| NCS0052 | 30" x 24" x 87" |
| NCS0053 | 36" x 18" x 75" |
| NCS0054 | 36" x 18" x 87" |
| NCS0055 | 36" x 24" x 75" |
| NCS0056 | 36" x 24" x 87" |

Add-On Unit of Shelving

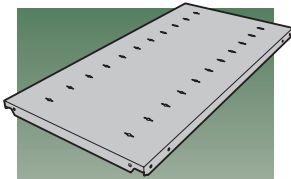


| | |
|-------------------------|------|
| 1 welded closed upright | SR12 |
| 2 box shelves | SH20 |
| 2 back panels | SH31 |
| 1 front base | SH28 |

| Product # | W x D x H |
|-----------|-----------------|
| NCS0062 | 30" x 24" x 75" |
| NCS0063 | 30" x 24" x 87" |
| NCS0064 | 36" x 18" x 75" |
| NCS0065 | 36" x 18" x 87" |
| NCS0066 | 36" x 24" x 75" |
| NCS0067 | 36" x 24" x 87" |

Box Shelf

SH20



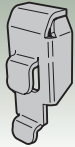
Box-type shelf with roll-formed and welded front and rear edges;

20-gauge steel. 1 1/4" thick;

4 sturdy and compact SH60 shelf clips included;

Perforations for dividers every 3" c/c.

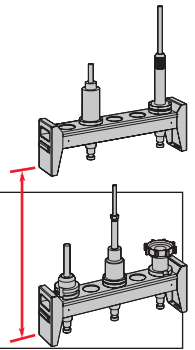
| Product # | W x D |
|-----------|-----------|
| SH20-3024 | 30" x 24" |
| SH20-3618 | 36" x 18" |
| SH20-3624 | 36" x 24" |



SH60
(4 hooks)

IMPORTANT

Refer to N50 tech sheet for Tool Racks and Decking to learn about recommended layouts based on tool height and intended use.



IMPORTANT

Two-level shelving is not recommended if first-level shelving contains only tool racks and two shelves.



NCS8003



NCS2307

NOTE

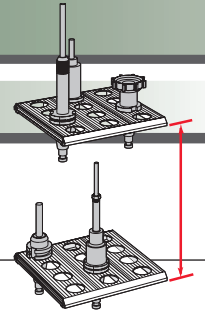
Tool racks must be ordered separately.

SEE
PAGE
168

Mini-Racking Components

These models are designed to receive steel shelves and decking for CNC tools. They include one tie bar per "long-span" level.

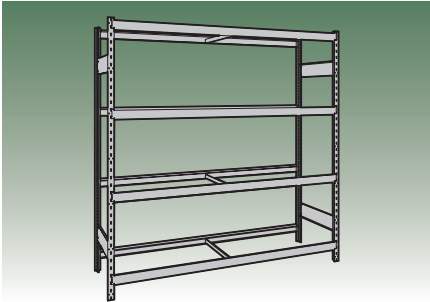
48" wide models or less have medium-duty beams and tie bars.
60" wide and 72" models wide have heavy-duty beams and tie bars.



IMPORTANT

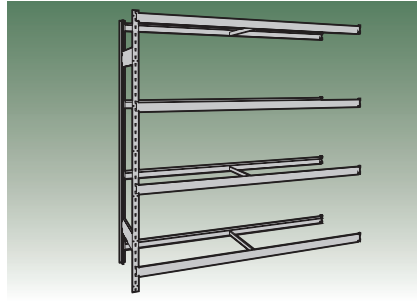
Refer to N50 tech sheet for Tool Racks and Decking to learn about recommended layouts based on tool heights and intended use.

Starter Unit



| D | H | # of levels | Width | | |
|---------------------------|-----|-------------|---------|---------|---------|
| | | | 48" | 60" | 72" |
| 18" | 75" | 4 | NCS6070 | NCS6072 | NCS6074 |
| 18" | 75" | 5 | NCS6080 | NCS6082 | NCS6084 |
| 24" | 75" | 4 | NCS6071 | NCS6073 | NCS6075 |
| 24" | 75" | 5 | NCS6081 | NCS6083 | NCS6085 |
| CAPACITY PER LEVEL | | | 1000 lb | 1925 lb | 1600 lb |

Add-On Unit



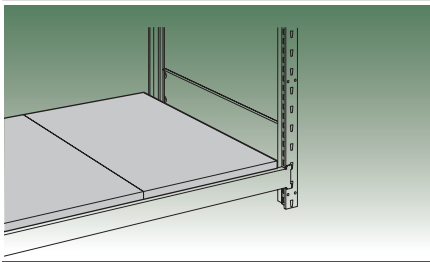
| D | H | # of levels | Width | | |
|---------------------------|-----|-------------|---------|---------|---------|
| | | | 48" | 60" | 72" |
| 18" | 75" | 4 | NCS6092 | NCS6076 | NCS6094 |
| 18" | 75" | 5 | NCS6086 | NCS6088 | NCS6090 |
| 24" | 75" | 4 | NCS6093 | NCS6077 | NCS6095 |
| 24" | 75" | 5 | NCS6087 | NCS6089 | NCS6091 |
| CAPACITY PER LEVEL | | | 1000 lb | 1925 lb | 1600 lb |

NOTE

For PVC decking capacity,

SEE PAGE 173

Steel Decking



Steel decking improves shelf strength. In addition, it has greater load capacity than wood panels;

SR40 decking may be combined with CNC tool decking on the same level.



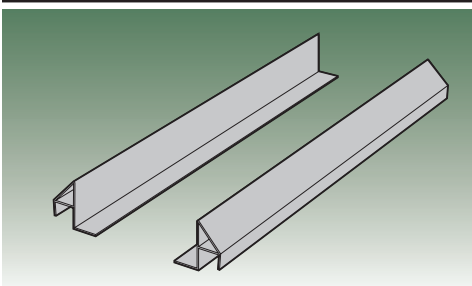
TO ORDER

Depending on unit dimensions and for each row of shelving, order the appropriate number of shelves and the product number(s) specified in the chart.

| Upright Assembly Depths | Beam Width | | | | | |
|-------------------------|--------------|-----------|--------------|------------------------|--------------|-----------|
| | 48" | | 60" | | 72" | |
| | Qty Required | Product # | Qty Required | Product # | Qty Required | Product # |
| 18" | 2 | SR40-2418 | + 2 1 | SR40-1818 SR40-2418 | 3 | SR40-2418 |
| 24" | 2 | SR40-2424 | + 2 1 | SR40-1824 SR40-2424 | 3 | SR40-2424 |

SR40

Label Holder



Useful for identifying your tools;

Sold for decking units combined with NC30, NC31 or SR40 shelves (included with NC33 and NC34 decking units);

Compatible with SR40 decking;

Polished look.

| Product # | W x H |
|-----------|----------|
| NC32-4801 | 48" x 1" |
| NC32-6001 | 60" x 1" |
| NC32-7201 | 72" x 1" |

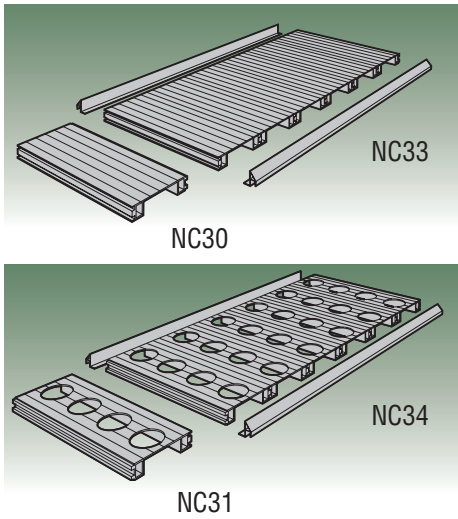
NC32



Components

PVC Decking for CNC Tools

NC30 / NC31 / NC33 / NC34



Platform offered with perforated surface (NC31 and NC34) or blank (NC30 and NC33);

Offered in 6" strips : NC30 and NC31;

Offered in a model representing a level of Mini-Racking of 48", 60" and 72" : NC33 and NC34. The model numbers for the perforated platform must be accompanied by a tool code;

Made of sturdy PVC, the extruded part of the rack protects tools against shocks, corrosion and blows;

PVC shelf (NC30/NC31) capacity for 18" D : 75 lb;

PVC shelf (NC30/NC31) capacity for 24" D : 100 lb;

The PVC shelf can be coupled with SR40 steel decking on the same level;

The 6" wide platform does not come with label holder;

48", 60" and 72" wide decking includes an NC32 label holder.

| Upright Assembly Depths | Type of Surface | Unit Width | Beam Width | | |
|-------------------------|-----------------|------------|--------------|--------------|--------------|
| | | 6" | 48" | 60" | 72" |
| 18" | Blank | NC30-1800 | NC33-481800 | NC33-601800 | NC33-721800 |
| | Perforated | NC31-18_ _ | NC34-4818_ _ | NC34-6018_ _ | NC34-7218_ _ |
| 24" | Blank | NC30-2400 | NC33-482400 | NC33-602400 | NC33-722400 |
| | Perforated | NC31-24_ _ | NC34-4824_ _ | NC34-6024_ _ | NC34-7224_ _ |

PVC shelves must be ordered separately from proposed models. The following chart gives the product number that matches your tool type.

To find out the number of holes in a platform with perforated shelves, multiply the number of perforated shelves in your platform by the number of holes in a NC31 shelf.

The number of tools that a PVC shelf can hold varies according to tool diameter and to the length of extruded surfaces. The number of holes specified in the chart indicates the number of perforations per extruded surface.

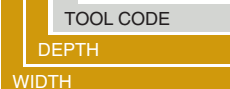


NCS6024

TO ORDER

PVC decking model numbers must be completed by adding the tool code.

EXAMPLE NC34-4818_ _



| TOOL TYPE | MINI-RACKING | | | | Tool code |
|------------------|---------------|------------|---------------|------------|-----------|
| | 18" PVC shelf | # of holes | 24" PVC shelf | # of holes | |
| Blank rack | NC30-1800 | — | NC30-2400 | — | 00 |
| Taper 30 | NC31-1801 | 8 | NC31-2401 | 10 | 01 |
| Taper 40 | NC31-1803 | 7 | NC31-2403 | 9 | 03 |
| Taper 50 | NC31-1805 | 4 | NC31-2405 | 5 | 05 |
| 3/4" Straight | NC31-1810 | 14 | NC31-2410 | 18 | 10 |
| 1" Straight | NC31-1811 | 14 | NC31-2411 | 18 | 11 |
| 1 1/4" Straight | NC31-1813 | 14 | NC31-2413 | 18 | 13 |
| 1 1/2" Straight | NC31-1815 | 5 | NC31-2415 | 7 | 15 |
| 1 3/4" Straight | NC31-1816 | 5 | NC31-2416 | 7 | 16 |
| 2" Straight | NC31-1818 | 4 | NC31-2418 | 5 | 18 |
| 2 1/4" Straight | NC31-1819 | 4 | NC31-2419 | 5 | 19 |
| 2 1/2" Straight | NC31-1821 | 4 | NC31-2421 | 5 | 21 |
| C4 Sandvik Capto | NC31-1831 | 18 | NC31-2431 | 24 | 31 |
| C5 Sandvik Capto | NC31-1832 | 7 | NC31-2432 | 9 | 32 |
| C6 Sandvik Capto | NC31-1833 | 7 | NC31-2433 | 9 | 33 |
| HSK 32 (A-C-E) | NC31-1841 | 18 | NC31-2441 | 24 | 41 |
| HSK 40 (A-C-E) | NC31-1842 | 18 | NC31-2442 | 24 | 42 |
| HSK 50 (A-C-E) | NC31-1843 | 8 | NC31-2443 | 10 | 43 |
| HSK 63 (A-C-E) | NC31-1844 | 5 | NC31-2444 | 7 | 44 |
| HSK 80 (A-C-E) | NC31-1845 | 4 | NC31-2445 | 5 | 45 |
| HSK 100 (A-C-E) | NC31-1846 | 3 | NC31-2446 | 4 | 46 |
| 32 KM | NC31-1850 | 18 | NC31-2450 | 24 | 50 |
| 40 KM | NC31-1851 | 18 | NC31-2451 | 24 | 51 |
| 50 KM | NC31-1852 | 8 | NC31-2452 | 10 | 52 |
| 63 KM | NC31-1853 | 5 | NC31-2453 | 7 | 53 |
| VDI 30 mm | NC31-1860 | 7 | NC31-2460 | 9 | 60 |
| VDI 40 mm | NC31-1861 | 4 | NC31-2461 | 5 | 61 |
| VDI 50 mm | NC31-1862 | 3 | NC31-2462 | 4 | 62 |